

TOSHIBA

Leading Innovation >>>

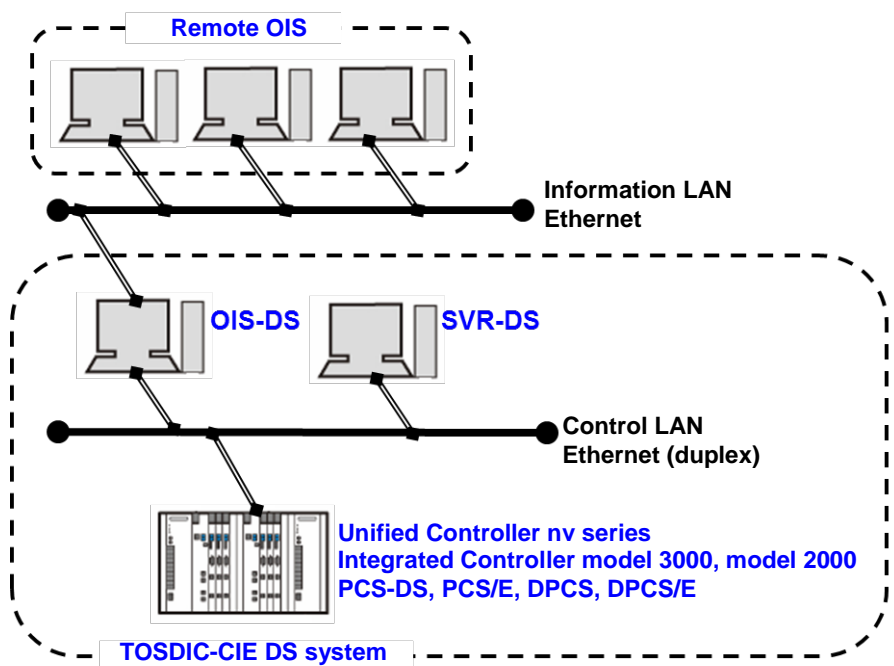
DS TOSDIC-CIE

OIS-DS Remote OIS Package

Remote system monitoring using information LAN

The monitoring of TOSDIC-CIE DS system through PC in information LAN (Intranet).

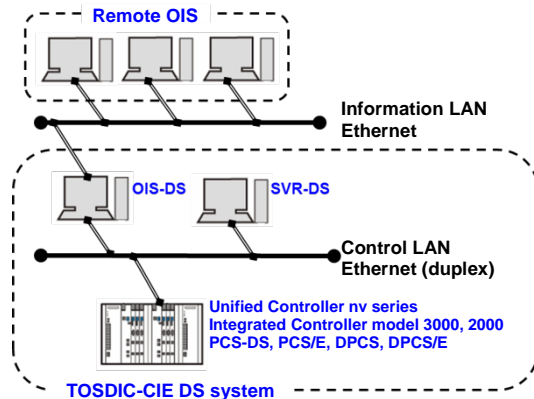
- Identical screen display to OIS-DS
- No need for additional screen creation work
- Transfer of engineering information from the TOSDIC-CIE DS side
- Flexible security for the connecting PC and the operation level
- Recording of the operations on the remote OIS in the history display function



Toshiba Group contributes to the sustainable future of planet Earth.

Features

Remote OIS Package is the software that enables the PC as remote OIS to display and perform setting operations of the same information as configured on the host OIS. Connection is via the information LAN (Intranet) of TOSDIC-CIE DS system and specifying any OIS in the system as host.



Engineeringless

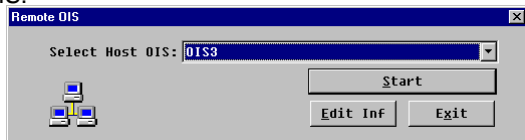
No special engineering work is required as tool registration information and graphics screen can be read by remote OIS from the host OIS.

Any changes made on the graphics screen of the host OIS are reflected by redisplaying. A function upgraded on the host OIS is reflected by restarting remote OIS.

Remote OIS functions

• Start

The host OIS is selected through the start screen of remote OIS.



• Screen display

The number of operation windows is one only, which always fills the entire OIS screen. The update interval is two seconds. The data on the standard screen and graphics screen is updated within the interval.

• Detection of network failures

Remote OIS monitors the status of the network with the host OIS. If communication with the host OIS is shut down due to a failure of the network or host OIS, a dialog appears notifying users.



Specifications

• Remote OIS

Supported OS	Windows®XP SP2 or higher (32bit)
CPU	Pentium®III or higher, or Celeron™566MHz or higher
Memory	128MB or more
Disk capacity	Disk space of 300MB or more
Screen resolution	1280×1024 or 1024×768 is recommended
Display color	65536 colors or more
Software	A sound driver is required for the use of alarm buzzer.

• Host OIS

Supported OS	Windows®XP SP2 or higher (32bit)
CPU	Pentium®IV 2GHz or higher
Memory	128MB 以上
Type of supported OIS	OIS-DS53 OIS-DS63 OIS-DS/SMART

• Restrictions

The use of a remote OIS restricts the number of devices to be connected.

No. of devices connected	Up to four units/host OIS
Access to controller station	A total of eight screens or less can access from OIS and remote OIS to each controller station (including integrated controller, Unified Controller nv series).
Host OIS	Connectable host OIS includes OIS within the Intranet, which can be recognized with its IP address.

Trademark

- Windows® is a registered trademark or trademark of Microsoft® Corporation in the United States and other countries.
- Intel® and Pentium® are registered trademarks or trademarks of Intel® Corporation.

Notes

- Under no circumstances, our company assumes no responsibility for incidental damages resulting from the use or unavailability of this product (including, but not limited to damages from loss of business profits, business interruption, loss of business information or data, or other monetary damages).
- This product is not manufactured for the purpose of being applied to a system requiring safety directly involved human life as follows. Please contact your TOSHIBA sales representative if there is a possibility of using this product for such use. [Ex.] ◇Main control systems of nuclear power plants, safety protection systems in nuclear facilities or other important systems requiring safety ◇Operation control system for collective transportation systems, and air traffic control system ◇Medical control systems relating to life support
- Before using the product, please read the instructions manual carefully and understand the contents, and then use the product correctly.
- This product cannot be used for any application products that are not allowed to be manufactured and sold in accordance with all applicable domestic and foreign laws, rules and orders.
- This product is controlled for export or overseas provision by Foreign Exchange and Foreign Trade Act.
- This product is controlled by the U.S. Export Administration Regulations, and an approval of the U.S. government is required for export depending on the destination of export.

● Contact Information

TOSHIBA CORPORATION

Social Infrastructure Systems Company
Security & Automation Systems Division
TEL: +81-44-331-1694 FAX: +81-44-548-9553
72-34, Horikawa-cho, Saiwai-ku, Kawasaki 212-8585, Japan

- Specifications or designs described in this catalog are subject to change without prior notice due to design change or other reasons.
- The contents in this catalog is as of January 2014.
- The name of the products described in this catalog may be used as a trademark by each company.